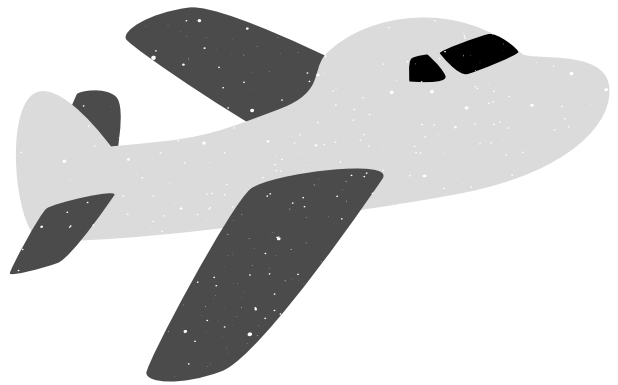
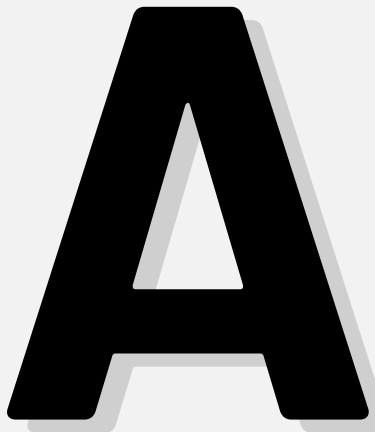



# Letter A

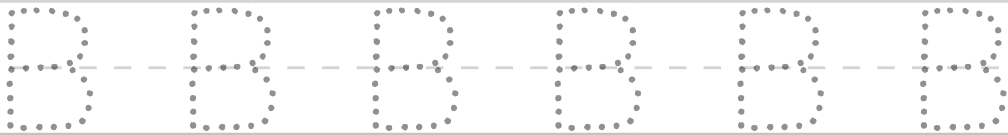


Blank handwriting practice lines consisting of a solid top line, a dashed middle line, and a solid bottom line, repeated three times.

# Letter B



B

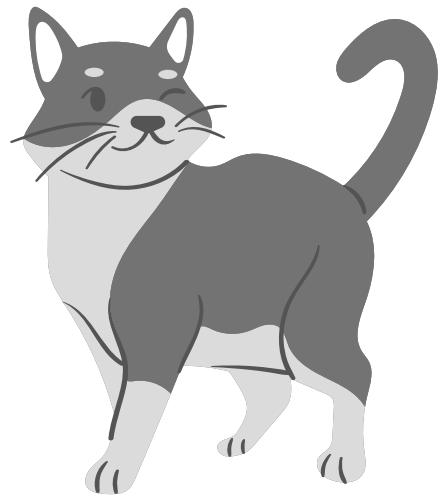


B B B B B B



Four sets of blank handwriting lines, each consisting of a solid top line, a dashed middle line, and a solid bottom line, for independent practice.

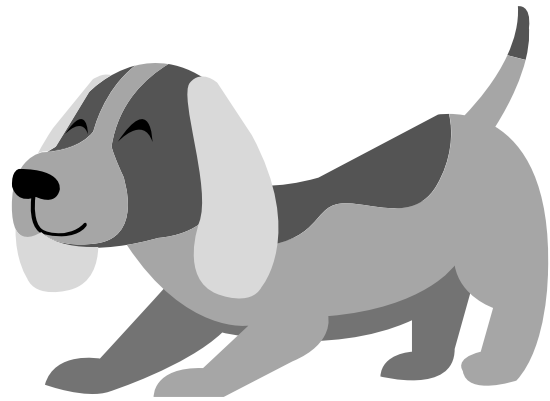
# Letter C



Handwriting practice lines for the letter C. The first row contains six dotted uppercase 'C's for tracing. Below are two sets of blank handwriting lines, each consisting of a solid top line, a dashed middle line, and a solid bottom line.

# Letter D

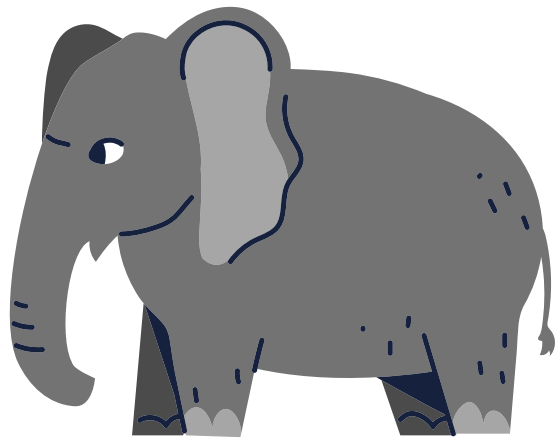
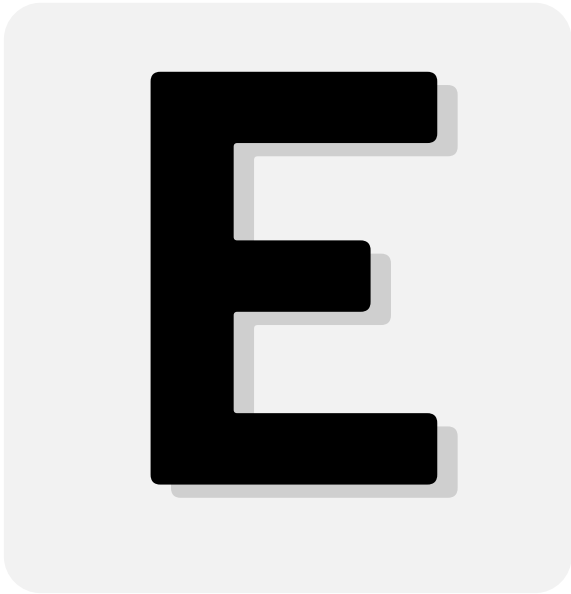
D



D D D D D D

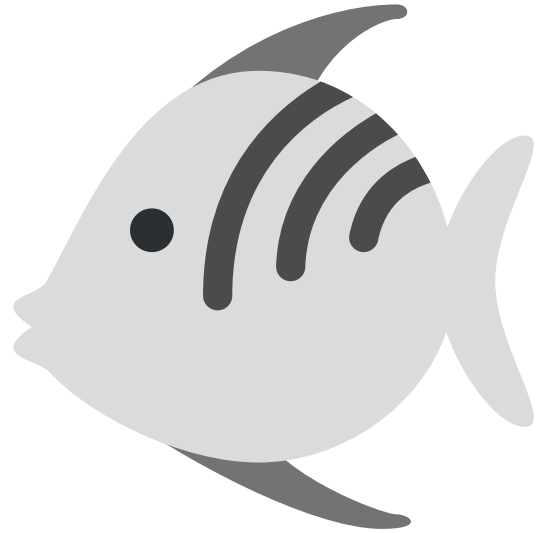
Handwriting practice lines consisting of six sets of horizontal lines. Each set includes a solid top line, a dashed middle line, and a solid bottom line, providing a guide for letter height and placement.

# Letter E



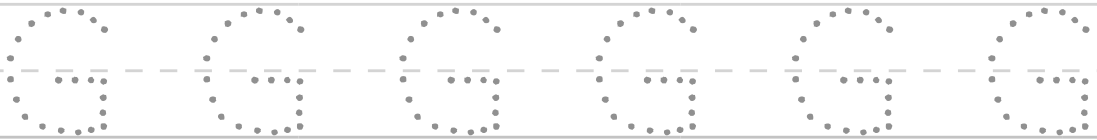
Tracing practice lines for the letter E. The first row contains five dotted uppercase 'E's for tracing. Below are three sets of empty handwriting lines, each consisting of a solid top line, a dashed middle line, and a solid bottom line.

# Letter F



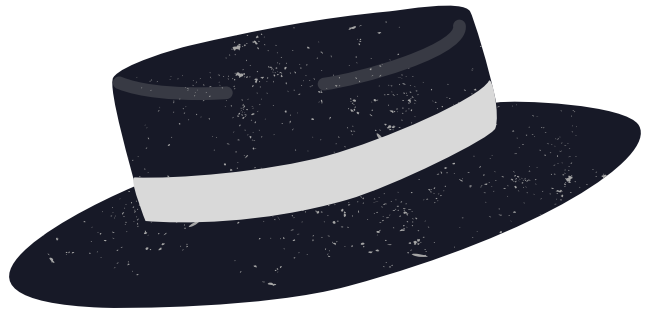
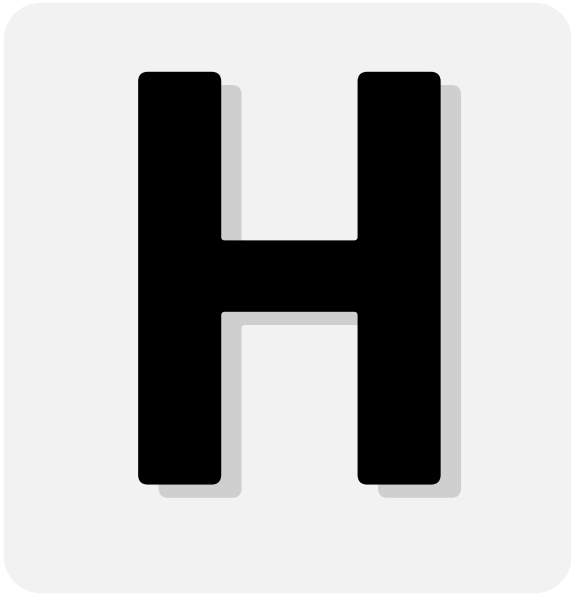
Tracing practice lines for the letter F. The first row contains six dotted uppercase 'F's on a three-line grid. Below are three more identical three-line grids for independent practice.

# Letter G



Blank handwriting practice lines consisting of a solid top line, a dashed middle line, and a solid bottom line, repeated four times.

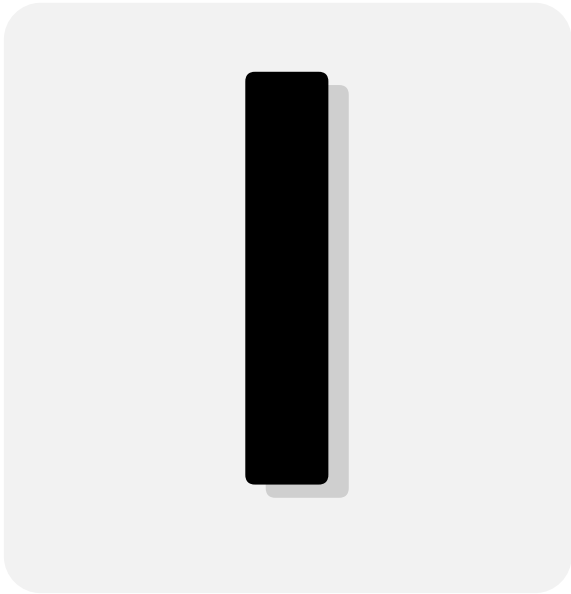
# Letter H



Tracing practice lines for the letter H. The first row contains six dotted uppercase 'H's for tracing. Below are three sets of blank handwriting lines, each consisting of a solid top line, a dashed middle line, and a solid bottom line.

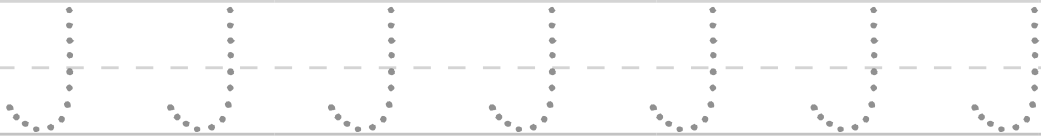
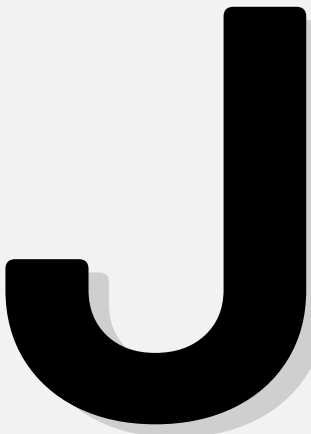


# Letter I

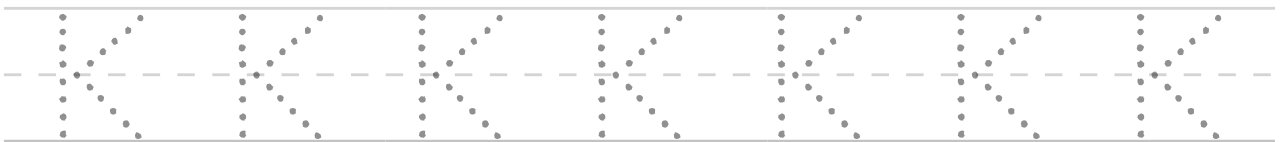
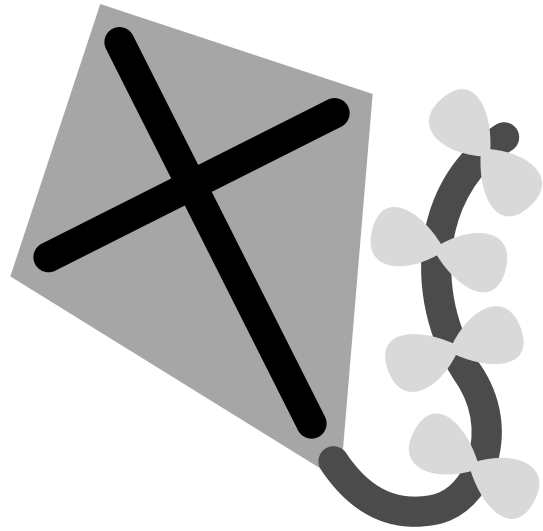
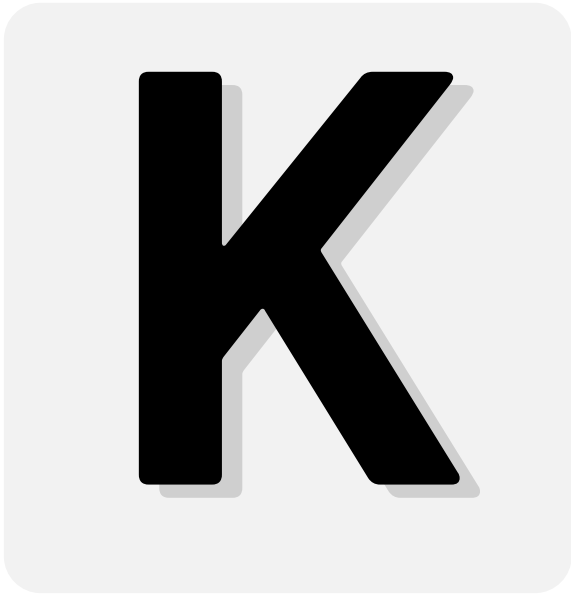


Tracing practice lines for the letter 'I'. The first row contains ten vertical dotted lines for tracing, each starting from a top dot and ending at a bottom dot. Below this are three sets of blank handwriting lines, each consisting of a solid top line, a dashed middle line, and a solid bottom line.

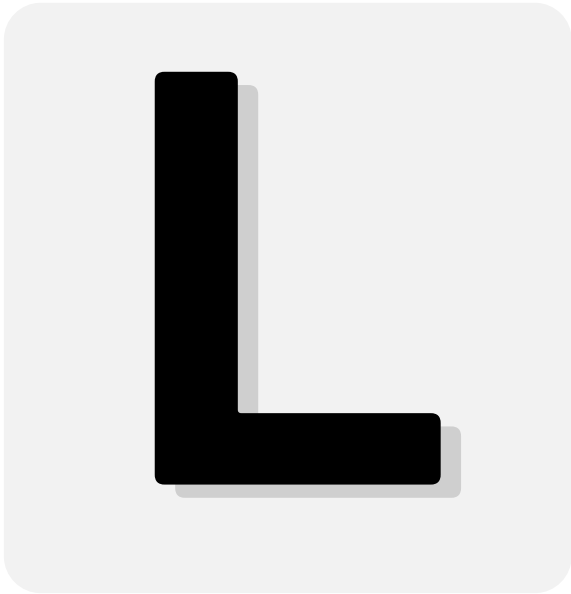
# Letter J



# Letter K

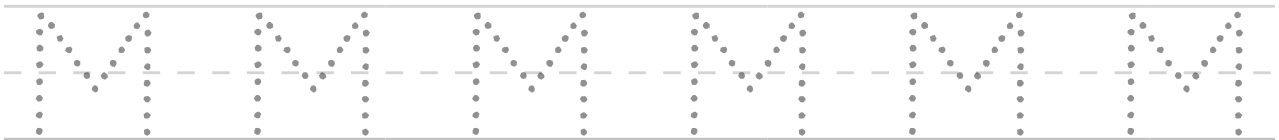
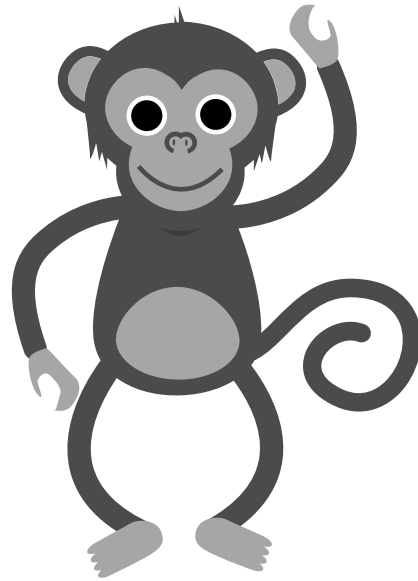


# Letter L



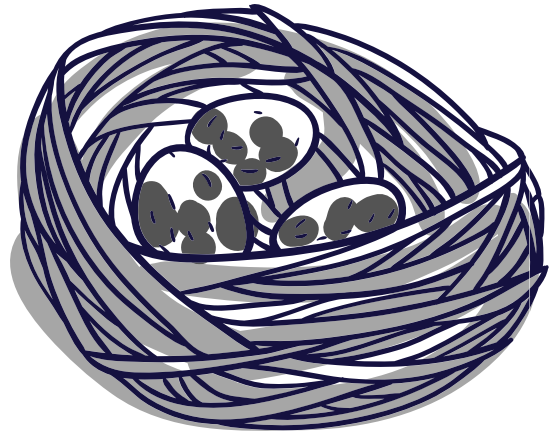
Tracing practice lines for the letter L. The first row contains seven dotted uppercase 'L's for tracing. Below are four sets of empty handwriting lines, each consisting of a solid top line, a dashed middle line, and a solid bottom line.

# Letter M



# Letter N

**N**



N N N N N N

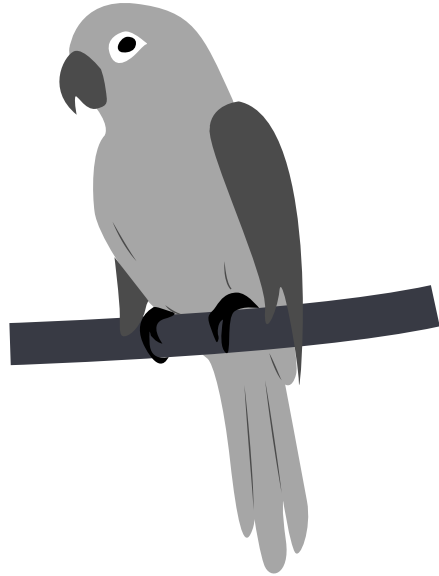
Blank handwriting practice lines consisting of solid top and bottom lines with a dashed middle line for letter height guidance.

# Letter O



Tracing practice lines for the letter O. The first row contains six dotted uppercase 'O's for tracing. Below are two sets of blank handwriting lines, each consisting of a solid top line, a dashed middle line, and a solid bottom line.

# Letter P



Tracing practice lines for the letter P. The first row contains six dotted uppercase 'P's for tracing. Below are three sets of empty handwriting lines, each consisting of a solid top line, a dashed middle line, and a solid bottom line.



# Letter Q

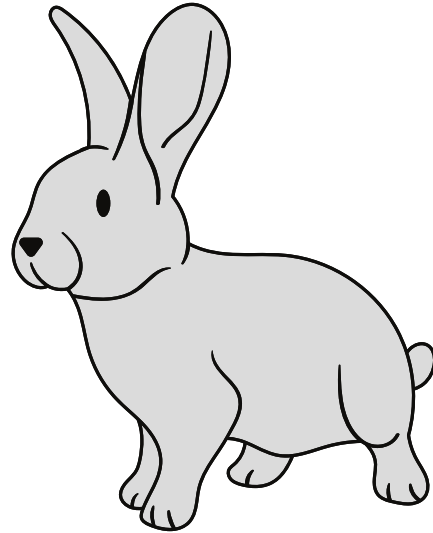


Tracing practice lines for the letter Q. The first row contains six dotted uppercase Qs for tracing. Below are three sets of blank handwriting lines, each consisting of a solid top line, a dashed middle line, and a solid bottom line.

# Letter R



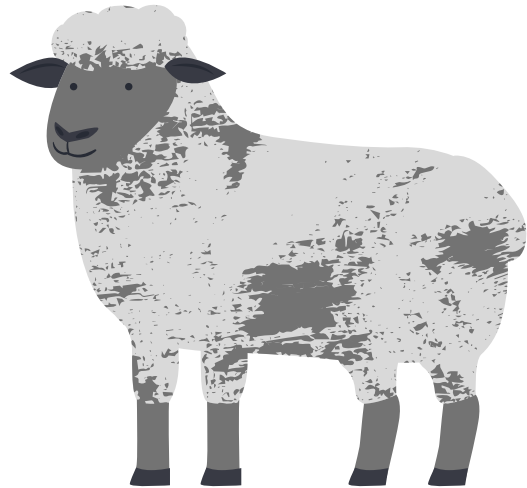
R



R R R R R R

Handwriting practice lines consisting of solid top and bottom lines with a dashed middle line. The first row contains dotted uppercase 'R's for tracing. Below are three more empty rows for independent practice.

# Letter S



s s s s s s

\_\_\_\_\_

-----

\_\_\_\_\_

-----

\_\_\_\_\_

-----

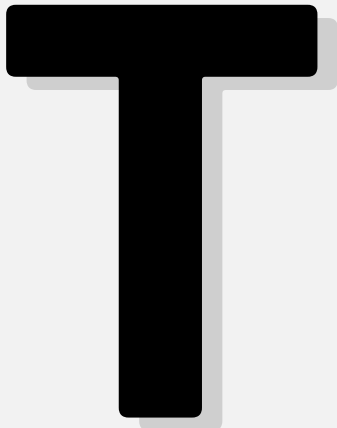
\_\_\_\_\_

-----

\_\_\_\_\_

-----

# Letter T

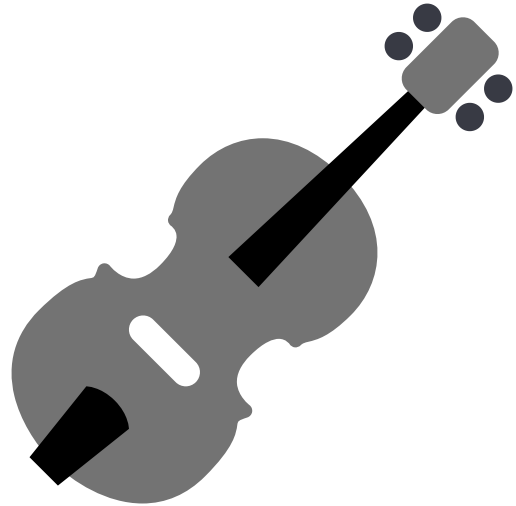


# Letter U



Tracing practice lines for the letter U. The first row contains five dotted uppercase 'U's for tracing. Below are three sets of blank handwriting lines, each consisting of a solid top line, a dashed middle line, and a solid bottom line.

# Letter V



Tracing practice lines for the letter V. The first row contains six dotted uppercase 'V's for tracing. Below are three sets of blank handwriting lines, each consisting of a solid top line, a dashed middle line, and a solid bottom line.

# Letter W

W



W W W W W

Blank handwriting practice lines consisting of solid top and bottom lines with a dashed middle line.

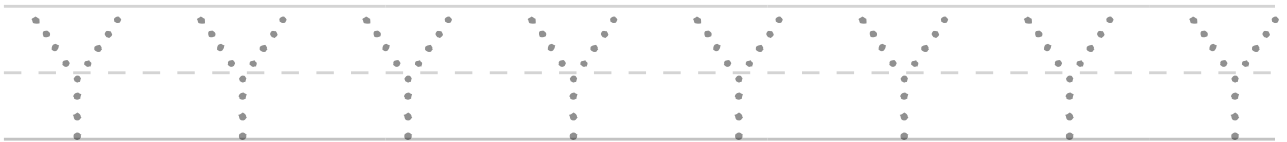
# Letter X



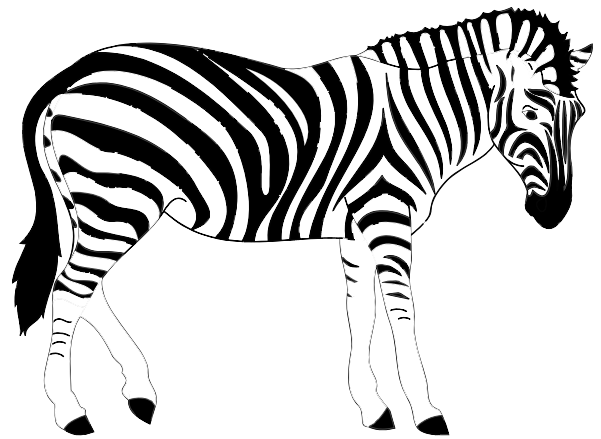
Tracing practice lines for the letter X. The first row contains seven dotted uppercase X's on a three-line grid. Below are three more identical empty three-line grids for independent practice.



# Letter Y



# Letter Z



Tracing practice lines for the letter Z. The first row contains six dotted uppercase 'Z's for tracing. Below it are three sets of empty handwriting lines, each consisting of a solid top line, a dashed middle line, and a solid bottom line.